



Structural Characterization of Mint (*Mentha x villosa* Huds) Stem and Leaf

**Ana Carolina Bezerra^{1*}, Luana da Silva Barbosa², José Flávio Cardoso Zuza¹,
Agda Malany Forte de Oliveira² and Camila Firmino de Azevedo³**

¹Universidade Federal da Paraíba, Rod. Prof. José Farias da Mata, km 12, 59.397-000, Areia, PB, Brazil.

²Universidade Federal de Campina Grande, R. Jario Vieira Feitosa, nº 1770, 58.840-000, Pombal, PB, Brazil.

³Universidade Estadual da Paraíba, Sítio Imbaúba, S/N, 58117-000, Lagoa Seca, PB, Brazil.

Authors' contributions

This work was carried out in collaboration among all authors. Authors ACB and LSB managed the analyses of the study, performed the statistical analysis and wrote the first draft of the manuscript. Authors JFCZ and AMFO managed the literature searches. Author CFA designed the study and wrote the protocol. All authors read and approved the final manuscript.

Article Information

DOI: 10.9734/JEAI/2019/v36i230232

Editor(s):

(1) Dr. Edgar Omar Rueda Puente, Professor, Department of Agricultural, Livestock, the University of Sonora, Mexico.

Reviewers:

(1) Weiming Cai, Zhejiang University, China.

(2) Dr. R. Mahalakshmi, India.

Complete Peer review History: <http://www.sdiarticle3.com/review-history/48998>

Original Research Article

Received 02 March 2019

Accepted 10 May 2019

Published 17 May 2019

ABSTRACT

Aims: The objective of this study was to identify the structural characteristics of the shoots of *Mentha x villosa* Huds and also, identify the main structures responsible for the production of active principles.

Methodology: The analyzes were performed with stems and leaves from adult and healthy plants, which presented a uniform morphological pattern. The materials selected for the anatomical analyzes were fixed in FAA for 24 hours and after this period conditioned in 70% alcohol. Cross-sections and paradermic sections were manually made with a cutting blade. For sections analysis, 1% sodium hypochlorite was used for discoloration and safranin 10% dye for tissue staining.

Results: The leaf of *Mentha x villosa* Huds presents asymmetric mesophyll, formed by palisade and lacunar parenchyma, and uniseriate epidermis. The diacytic stomata are located on the abaxial

*Corresponding author: E-mail: acbezerra78@gmail.com;

surface of the leaves with different sizes, all having a substomatal chamber. On both sides of leaves, glandular trichomes were observed in great quantity. The leaf midrib is formed by a large vascular bundle, with xylem facing the adaxial surface and phloem facing the abaxial surface. The stem presents uniseriate epidermis and below it can be found one or two layers of colenchyma. The vascular bundle consists of four main xylem points, and externally to it is found the phloem, which gives the quadrangular shape to the stem. *Mentha x villosa* Huds has characteristics that are common to aromatic species of the Lamiaceae family, which makes its characterization and differentiation difficult, as for example, its secretory structures which do not have taxonomic importance for differentiation on this species, since they are similar in other species of the same family.

Conclusion: However, *Mentha x villosa* has a larger number of cell layers in the lacunar parenchyma, which is an important characteristic for the differentiation of species.

Keywords: Lamiaceae; plant anatomy; medicinal plant; quality control.

1. INTRODUCTION

The use of medicinal plants is significantly important, according to the World Health Organization (WHO), 80% of the world's population uses traditional medicine to ease or cure diseases [1]. Data from the Ministry of Health of 2006, reported that about 37% of the Brazilian population uses products of natural origin, especially plants [2]. Mint is a species (*Mentha x villosa* Huds) with medicinal and aromatic properties, cultivated throughout the Brazilian territory [3]. It is an herbaceous, low-growing plant with erect branches, opposite and short petiolate oval leaves, with strong and characteristic aroma [4]. This plant is a hybrid originated from the cross between *Mentha spicata* L. and *Mentha suaveolens* Ehlh. Due to the numerous hybrids from spontaneous crossbreeding among its species, it always presented conflicts in its taxonomy, where mint can easily be confused with other species, as happens with *Mentha crispa* L. [5,4].

Mentha x villosa Huds is a plant from subtropical climate susceptible to intense winters. It requires light soils, rich in organic matter and well drained, daily irrigation is recommended, since high temperatures associated with water deficit, reduce the content of essential oils [4].

Mint is usually sold fresh at fairs and supermarkets like other vegetables. Some accessions are rich in piperitenone oxide, an effective active principle against amebiasis and giardiasis [6]. This plant is asexually propagated and there are no seeds of *Mentha x villosa* Huds on markets. In Brazil there was a drastic reduction in mint production due to problems of soil fertility and management, considering that

nutritional conditions are essential for the balance between biomass accumulation and essential oil production, which are indispensable for a profitable agricultural productivity [7,8].

Although the phytotherapy efficiency has been proven, the absence of quality, adulteration, and incorrectly use interfere on its efficiency and even in the quality of the product [9], a common concern between the health and scientific community.

Among the causes of poor quality of vegetable material, the biological contamination (fungi, bacteria) and physical (soil), associated with the lack of safe agricultural practices, long and discontinuous drying process and, most of the time, inadequate transport and packaging are among the most important. Besides these problems, the contents of the active principle are confusing due falsification by mixing of other plant organs and even other plant species [10].

Therefore, many elements contribute to the product quality: plant material purity (without adulteration), low contamination by bacteria, fungi, pesticides, absence of radioactivity and heavy metals and adequate concentration of active compounds [11]. Therefore, studies that include the morphological and anatomical characterization are important for the determination of the quality control used in the production of herbal products, especially vegetable drugs [12,13].

The objective of this study was to anatomically characterize *Mentha x villosa* Huds and also identify the plant structures responsible for the production of active principles.

2. MATERIALS AND METHODS

Shoots (leaves) of *Mentha x villosa* Huds (mint) were collected in an organic production area in the municipality of Alagoa Nova - PB (07°03'07 "S latitude and 35°45'56" W longitude). The samples were then taken to the Laboratório de Biologia of the Departamento de Agroecologia e Agropecuária - Universidade Federal da Paraíba, Brazil.

The evaluations were performed on stems and leaves from adult and healthy plants, which presented uniform morphological patterns. For this, a brief description of the general anatomical organization of the leaf and stem of the studied species was made, with emphasis on the identification of secretory tissues.

The materials selected for the anatomical evaluations were fixed in FAA (5% formaldehyde, 5% acetic acid and 90% of alcohol at 70%) for 24 hours and then conditioned in 70% alcohol. Cross sections were made manually with a cutting blade in the median region of the leaf and in the region between the third and the fourth node from the apex of the stem, using embaúba (*Cecropia pachystachya*) petiole and styrofoam (expanded polystyrene) as support. For cross sections analysis, 1% sodium hypochlorite was used as decolorant and safranin 10% dye for tissue staining. The material was mounted on semi-permanent glass slides with glycerin and analyzed in a photomicroscope.

3. RESULTS AND DISCUSSION

The leaf cross-section of *Mentha x villosa* Huds, presents asymmetric mesophyll, formed by palisade and lacunar parenchyma and uniseriate epidermis (Fig. 1A).

The palisade parenchyma is formed by one or two elongated cells on the adaxial surface of the leaf, while the lacunar parenchyma is formed by three to five layers of cells of varying sizes. The cells of the epidermis have thick outer periclinal walls and are covered by cuticles. The diacytic stomata are located on the abaxial surface of the leaf and have different sizes, all having a substomatal chamber (Fig. 1B). On both leaf surfaces, glandular trichomes were observed in great quantity. The leaf mid rib is formed by a large vascular bundle, which presents two to three layers of collenchyma after the epidermis, with xylem facing the adaxial face and phloem facing the abaxial face.

The stem presents uniseriate epidermis, with the glandular trichomes of various shapes and sizes throughout its surface, and below it there is one to two layers of collenchyma (Fig. 2). The vascular bundle consists of four main xylem points, and externally to it is found the phloem, which gives the quadrangular shape to the stem, as already observed in other species of Lamiaceae [14,15,16]. The medulla presents rounded parenchyma cells of various sizes.

Similar characteristics were observed in other species of Lamiaceae. The lamina of *Plectranthus amboinicus* (Lour.) Spreng., presents one to two layers of palisade parenchyma, however, regarding the lacunar parenchyma, *Mentha x villosa* has three to five layers of cells differing from *P. amboinicus* which presents two to three layers of lacunar parenchyma. The stem of *P. amboinicus* also presents characteristics similar to mint, two to three layers of angular collenchyma, below the uniseriate epidermis, formed by tiny cells. The medullary and cortical regions are filled by common parenchyma with meatus [14].

Diacytic stomata are most common in Lamiaceae [17], but anisocytic stomata have already been described on leaves of other species, such as *Hyptis ovalifolia* Benth., and *Hyptis rugosa* Benth. [18].

In the leaves and stem of *Mentha x villosa*, glandular trichomes of two types were found: sessile glandular trichomes with a globular pluricellular secretory apex (Fig. 3A) and glandular trichomes with unicellular pedicel and unicellular secretory apex (Fig. 3B).

The trichomes, such as the cuticle and the stomata, are present in different ways according to the conditions offered to the plants, presenting taxonomic importance [19].

The trichomes avoid herbivory and act as an obstacle to those that try to feed on the tissues of the plant, due to its characteristics such as density, shape and size. The glandular trichomes have a vesicular structure that can accumulate substances such as terpenes, gums and tannins, which in contact with predators can trigger several reactions, repelling, provoking limb immobility or even toxicity and death [20].

These results are in agreement with those found by [21], where were found the presence of glandular trichomes pelted and capitated on both surfaces of the epidermis of *Mentha cf. aquatica*,

Mentha x piperita and *Mentha arvensis*. In addition to glandular trichomes, the species *M. arvensis* presents a high density of tectonic trichomes, a characteristic that distinguishes it from *Mentha x villosa*.

In other species of the Lamiaceae family, such as lavender, several types of tectors and glandular trichomes were found, present in leaves and inflorescences. The tectorstrichomes are higher in number than the other types,

pluricellular, have sharp, erect or curved tip, and most of them are branched and arborescent [22].

Zamfirache et al. [15], describing *Ocimum basilicum* L. (Lamiaceae), found two types of glandular trichomes: the first located in small depressions in the upper epidermis with bicellular gland and the second located in greater depressions in the inferior epidermis with four gland cells.

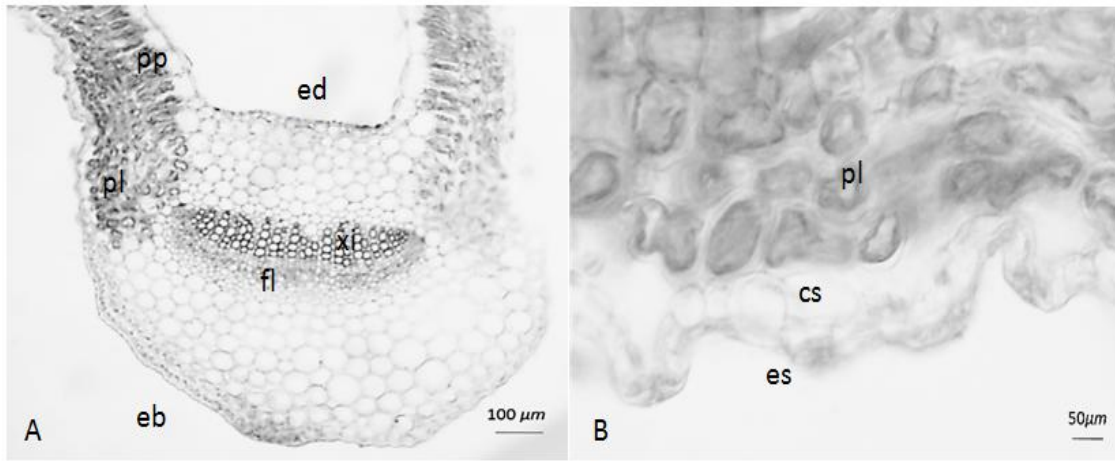


Fig. 1.General structure of the leaf cross-section. **A.** Leaf of *Mentha x villosa*Huds. **B.** Abaxial epidermis of the leaf showing stomata with sub-stomatal chambers. (pp - palisade parenchyma, lp - lacunar parenchyma, de - adaxial epidermis, be - abaxial epidermis, ph - phloem, xy - xylem, st - stomata, sc - sub-stomatal chamber)

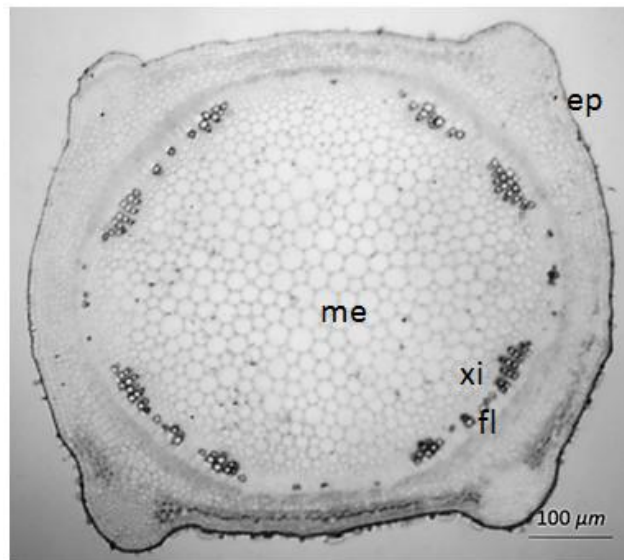


Fig. 2.General structure of *Mentha x villosa*adults.Huds stem in cross - section (ep – epidermis; me- medulla, xy - xylem, ph - phloem)

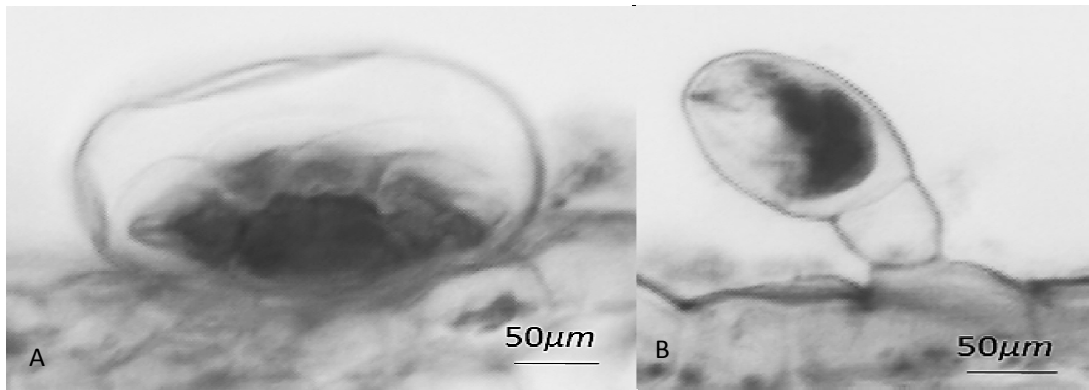


Fig. 3. *Mentha x villosa* Huds secretory structures. **A.** sessile glandular trichome; **B.** Glandular unicellular pedicel trichome and unicellular secretory apex

4. CONCLUSION

Mentha x villosa Huds has structural characteristics that are common in aromatic species of the family Lamiaceae, which makes it difficult to characterize and differentiate them, such as their secretory structures which do not have taxonomic importance for the differentiation of this species, since similar structures are found in other species of the Lamiaceae family. However, *Mentha x villosa* has a higher number of cell layers in the lacunar parenchyma, which makes it an important characteristic for the differentiation among species.

COMPETING INTERESTS

Authors have declared that no competing interests exist.

REFERENCES

1. Lopes RM, Oliveira TT, Nagem TJ, Pinto AS. Flavonoids. *Biotechnology Science & Development*. 2010;3(14):18-22.
2. Brazil. Ministry of Health. Secretariat of Science, Technology and Strategic Inputs. Department of Pharmaceutical Assistance. National Policy of Medicinal and Phytotherapeutic Plants. Brasília: Ministry of Health. 2006;60.
3. Dimech GS, Araújo AVD, Arruda VM, Baratella-Evêncio L, Wanderley AG. Evaluation of the hydroalcoholic extract of *Mentha crispata* on the reproductive performance in Wistar rats. *Brazilian Journal of Pharmacognosy*. 2006;16(2): 152-157.
4. Soares CA. Medicinal plants from planting to harvesting. 1. Ed. São Paulo: Icon. 2010;310.
5. Ferreira CP. Chemical and morphological characterization of *Mentha* spp genotype. (Master's Dissertation at the Faculty of Agronomy and Veterinary Medicine), Brasília; 2008.
6. Silva RLC. Development of modified release floating tablets containing a parasiticide. PhD Thesis at the University of Porto; 2014. Portugal
7. Paulus D, Medeiros S, Santos O, Manfron P, Paulus E, Fabbrin E. Content and quality of essential oil of mint (*Mentha arvensis* L.) produced under hydroponic and soil cultivation. *Brazilian Journal of Medicinal Plants*. 2007;9(2):80-87.
8. Valmorbide J, Boaro CSF. Growth and development of *Mentha piperita* L. in nutrient solution as affected by rates of potassium. *Brazilian Archives of Biology and Technology*. 2007;50:379-384.
9. Melo JGD, Martins JDGDR, Amorim ELCD, Albuquerque UPD. Quality of medicinal products marketed in Brazil: Brazil nut (*Aesculus hippocastanum* L.), lemon grass (*Cymbopogon citratus* (DC.) Stapf) and scent (*Centella asiatica* (L.) Urban). *Acta Botanica Brasílica*. 2007;21(1).
10. Martinazzo AP. Drying, storage and leaf quality of *Cymbopogon citratus* (D.C.) Stapf. PhD Thesis - Quality in Medicinal Plants, Federal University of Viçosa; 2006.
11. Poutaraud A, Girardin P. Improvement of medicinal plant quality: A *Hypericum perforatum* literature review as a example. *Plant Genetic Resources*. 2005;3(2):178-189.

12. Brazil. Ministry of Health. National Health Surveillance Agency. Collegial Board Resolution No. 10 of March 9, 2010. Provides for the notification of vegetal drugs to the National Agency of Sanitary Surveillance (ANVISA) and other measures. Official Journal of the Union. 2010;46(1):52-9.
13. Brazil. Ministry of Health. National Health Surveillance Agency. Collegial Board Resolution No. 14 of March 31, 2010. Provides for registration of herbal medicines. Official Journal of the Union. 2010;63(1):85-7.
14. Mauro C, Silva CDP, Missima J, Ohnuki T, Rinaldi RB, Fleet M. Comparative anatomical study of the vegetative organs of boldo miúdo, *Plectranthus ornatus* Codd. and malvariço *Plectranthus amboinicus* (Lour.) Spreng.-Lamiaceae. Brazilian Journal of Pharmacognosy. 2008;18(4):608-13.
15. Zamfirache MM, Toma C, Duca M, Dunca S, Olteanu Z, Stefan M, Padurariu C. Comparative study on the morphology and anatomy of the vegetative apparatus in two *Ocimum basilicum* L. breeds. Biologie Vegetală. 2008;2(2):38-47.
16. Fiuza TS. Study of leaves and stem of *Hyptidendron canum* (Pohl ex Benth.) Harley, Lamiaceae. Brazilian Journal of Pharmacognosy. 2010;20(2):192-200.
17. Metcalfe CR, Chalk L. Anatomy of the dicotyledons. Oxford at the Clarendon Press. 1950;276.
18. Rezende MH, et al. Leaf anatomy of four species of Hyptis (Labiatae) occurring in Goiás. In: National Congress of Botany, 54, 2003, Belém. Anais Belém: Embrapa Western Amazon; 2003.
19. Silva LM, Alquini Y, Cavallet VJ. Interrelations between plant anatomy and plant production. Acta Botanica Brasilica. 2005;19(1):183-194.
20. Levin DA. The role of trichomes in plant defense. Quarterly Review of Biology. 1973;48:3-15.
21. Deschamps C, Zanatta JL, Roswalka L, de Cácia Oliveira M, Bizzo HR, Alquini Y. Density of glandular trichomes and production of essential oil in *Mentha arvensis* L., *Mentha x piperita* L. and mentha cf. Aquatica l. Science and Nature. 2006;28(1):23-34.
22. Dalla Riva A, Petry C, Aimi Severo BM. Anatomical characterization of leaves and inflorescences of Lavender species (Lamiaceae) used as medicinal plants in Brazil. Science and Nature. 2014;36(2): 120-127.

© 2019 Bezerra et al.; This is an Open Access article distributed under the terms of the Creative Commons Attribution License (<http://creativecommons.org/licenses/by/4.0>), which permits unrestricted use, distribution, and reproduction in any medium, provided the original work is properly cited.

Peer-review history:

The peer review history for this paper can be accessed here:
<http://www.sdiarticle3.com/review-history/48998>