



# Effect of Yeast and Different Levels of Sugar on Indian Olive (*Elaeocarpus serratus* L.) Cider

Rormi Phungshok<sup>a++\*</sup>, Annjoe V. Joseph<sup>a#</sup>, Anita Kerketta<sup>a#</sup>,  
Vijay Bahadur<sup>b†</sup> and Samir E. Topno<sup>a#</sup>

<sup>a</sup> Sam Higginbottom University of Agriculture, Technology and Sciences, Prayagraj- 211007, Uttar Pradesh, India.

<sup>b</sup> Department of Horticulture, Sam Higginbottom University Agriculture, Technology and Sciences, Prayagraj- 211007, Uttar Pradesh, India.

## Authors' contributions

This work was carried out in collaboration among all authors. All authors read and approved the final manuscript.

## Article Information

DOI: 10.9734/IJPSS/2023/v35i173182

## Open Peer Review History:

This journal follows the Advanced Open Peer Review policy. Identity of the Reviewers, Editor(s) and additional Reviewers, peer review comments, different versions of the manuscript, comments of the editors, etc are available here: <https://www.sdiarticle5.com/review-history/102219>

Original Research Article

Received: 25/04/2023

Accepted: 28/06/2023

Published: 01/07/2023

## ABSTRACT

The study was conducted in Completely Randomized Design with eight treatments replicated three times. The treatments were T1 (Indian olive 500 g +250 ml water +150 g sugar), T2 (Indian olive 500 g +250 ml water +200 g sugar), T3 (Indian olive 500 g +250 ml water +250 g sugar), T4 (Indian olive 500 g +250 ml water +300 g sugar), T5 (Indian olive 500 g +250 ml water +150 g sugar +1.5 g yeast), T6 (Indian olive 500 g +250 ml water +200 g sugar +1.5 g yeast), T7 (Indian olive 500 g +250 ml water +250 g sugar +1.5 g yeast) and T8 (Indian olive 500 g +250 ml water +300 g sugar +1.5 g yeast). Total soluble solids, pH and specific gravity decreased while alcohol content, acidity and sensory qualities increased with increasing length of fermentation. From the above experiment,

<sup>++</sup> M.Sc. (Ag) Horticulture (Fruit Science);

<sup>#</sup> Assistant Professor of Horticulture;

<sup>†</sup> Associate Professor and Head;

\*Corresponding author: E-mail: rormiphungshok2000@gmail.com;

it is concluded that treatment T5 was found superior in respect to parameters like total soluble solids, pH, acidity, alcohol content, and specific gravity. Whereas the highest score for organoleptic parameters like color and appearance, aroma, taste, and overall acceptability were recorded in T6. Treatment T6 also recorded highest in terms of gross return, the net return and cost-benefit ratio. Since Indian olive contains numerous nutritional and medicinal properties and is still underutilized, the production of cider from this fruit can help reduce post-harvest losses and help in value addition of this crop. This study showed that acceptable cider can be produced from Indian olive using yeast (*Saccharomyces cerevisiae*).

**Keywords:** Cider; Indian olive; *Saccharomyces cerevisiae*; sugar; fermentation.

## 1. INTRODUCTION

*Elaeocarpus serratus* (L.) commonly known as Indian olive or wild olive or Ceylon olive is a subtropical fruit tree belonging to the family Elaeocarpaceae. It is indigenous to Sri Lanka and the fruit tree is found in some parts of North Eastern states of India. It requires warmer conditions and is sensitive to frost and large fluctuations in temperatures. It is a large, evergreen, drought-tolerant, perennial broad-leaved tree with a large spreading crown. It attains a height of about 15-70 meter, 5-10 meter in canopy spread, blooms during September-October, and fruiting occurs during January. Fruits are ovoid or globose berries of 4-5 cm long, weighing  $3.58 \pm 0.09$  g and a pulpy pericarp encloses a stony seed. Depending on the size of the fruit, the pulp weighs  $2.10 \pm 0.04$  g whereas the seed weighs  $1.47 \pm 0.07$  g.

*Elaeocarpus serratus* is one of the underutilized fruit species in India and is found and used extensively in West Bengal locally known as Jalpai, Assam as Zolphai, and Manipur as Chorphon. The consumption of these fruits has become increasingly important due to their potential health effects. Although it is underutilized fruit species, they have the potential to contribute to food security, health and nutrition, income generation and environmental services [1]. The ripened fruits stand out not only for their unique sour-bitter taste but also for their amazing nutritional and medicinal properties. In folk medicine, various parts of this plant have been extensively used in the treatment of anxiety, depression, nerve pain, epilepsy, migraine, asthma, hypertension, arthritis, and liver diseases [2]. Apart from the raw consumption of fruit, fruit pulp is used for the preparation of value-added products such as jam, jellies, candy, cider/wine, and squash [3].

Food processing is an important method to minimize postharvest loss and to improve

linkages between industry and agriculture. The loss can be minimized by converting the surplus food into various value-added products like fermented and unfermented beverages. Fermentation is a potential tool in the development of new products from fruits with modified physio-chemical and sensory qualities especially flavor and nutritional components [4].

In most parts of the world, cider is an alcoholic beverage that is the result of fermentation made from pressed apple juice, effectively following the same process as wine. Most cider production processes rely on various strains of *S. cerevisiae* that allow rapid and reliable fermentation, reduce the risk of sluggish or stuck fermentation, and prevent microbial contamination [5]. Yeasts are the prominent organisms involved in cider production and determine several characteristics of the cider, including the flavor, through a range of mechanisms and activities [6].

Alcoholic fermentation is characterized by the conversion of sugar into ethanol by yeast, especially the *Saccharomyces cerevisiae* strain of fungi used for alcoholic fermentation. The yeast eats all the sugar inside the vat of cider and turns it into alcohol and carbon dioxide. Once the whole sugar inside the cider is converted, the yeast dies due to a lack of food, and fermentation is stopped. Temperature is the most important factor for the fermentation process; temperatures ranging from 4 to 16°C are beneficial for cider making. After the completion of fermentation, the fermented cider is made, which contains about 4 to 6 percent alcohol.

Cider is a pleasant, refreshing, thirst-quenching, and hygienic beverage. It is also the most nutritive and health-giving of all fermented drinks. Besides, it is said to possess remarkable therapeutic properties, like the prevention of stone formation in the bladder on account of its diuretic properties [7].

Indian olive cider, being a fruit-based fermented and undistilled product, contains most of the original nutrients present in it. Apart from the original nutrients, the nutritive value of Indian olive cider is increased due to the release of amino acids and other nutrients from the yeast during fermentation. Depending on the alcohol content, cider is either soft or hard. The cider containing 1-5 percent alcohol is considered as soft cider and 7-12 percent is considered hard cider. Research shows that Indian olive cider is nutraceutical in nature, curing various ailments naturally. It is rich in antioxidants, which delay the ageing of cells, cure diabetes and insomnia, act as anti-inflammatory agents, and reduce the risk of cardiovascular diseases, cancer, Parkinson's, and Alzheimer's diseases.

Being an underutilized fruit, many fruits are wasted as there is little knowledge about postharvest management of this fruit. Since it yields several useful items including quality fodder, firewood and edible fruits, proper study on this fruit could minimize its wastage and maximize income generation. Therefore, an experiment has been carried out with the aim of studying the effect of yeast and different levels of sugar on the physio-chemical properties and quality of Indian olive cider and estimating the economics of various treatments.

## 2. MATERIALS AND METHODS

The study was conducted in a Completely Randomized Design with eight treatments replicated thrice. The treatments were T1 (Indian olive 500 g +250 ml water +150 g sugar), T2 (Indian olive 500 g +250 ml water +200 g sugar), T3 (Indian olive 500 g +250 ml water +250 g

sugar), T4 (Indian olive 500 g +250 ml water +300 g sugar), T5 (Indian olive 500 g +250 ml water +150 g sugar +1.5 g yeast), T6 (Indian olive 500 g +250 ml water +200 g sugar +1.5 g yeast), T7 (Indian olive 500 g +250 ml water +250 g sugar +1.5 g yeast) and T8 (Indian olive 500 g +250 ml water +300 g sugar +1.5 g yeast).

### 2.1 Raw Materials and Preparation of Cider

The fresh and ripened fruit of Indian olive was procured from Nungshong village of Ukhrul district, Manipur. The fruits that are free from diseases and pests were selected. Completely rotten fruits were discarded and rotten parts of the fruits were removed. The selected fruits were washed thoroughly in clean tap water to remove dust, dirt, and other undesired materials adhering to the fruits. The selected fruits were cut into pieces with a stainless knife and 250 ml of water was added in all the treatments. The "must" was sieved using muslin cloth of pore size 0.8 mm.

### 2.2 Yeast and Inoculum Preparation

*Saccharomyces cerevisiae* was obtained from the local market. The inoculum was prepared by inoculating 1.5 g brewer's yeast which was added in 10 ml of lukewarm water in a beaker and stirred gently. The activated yeast was added to the pulp for further fermentation.

### 2.3 Preparation of Cider

Cider was prepared with different concentrations of sugar. The steps of preparation are given as flow chart which is depicted in Fig. 1.

**Table 1. Meteorological data during the experimental period (January 2023 - March 2023)**

Months	Time span	Temperature (°C)		Relative humidity (%)		Rainfall (mm)
		Max	Min	Max	Min	
January	1 <sup>st</sup> week	25	5.4	97	57	0
	2 <sup>nd</sup> week	24.6	5.2	97	47	0
	3 <sup>rd</sup> week	23.6	6	92	56	0
	4 <sup>th</sup> week	28.4	7.6	95	49	8.2
February	1 <sup>st</sup> week	25.2	10	88	38	0
	2 <sup>nd</sup> week	30.2	13.2	84	37	0
	3 <sup>rd</sup> week	31	13.6	83	42	0
	4 <sup>th</sup> week	34.2	14.2	78	39	0
March	1 <sup>st</sup> week	35.2	13.2	78	37	0
	2 <sup>nd</sup> week	35.6	13.6	80	38	0
	3 <sup>rd</sup> week	33.2	13	85	39	18.2
	4 <sup>th</sup> week	35.2	16.2	84	37	0

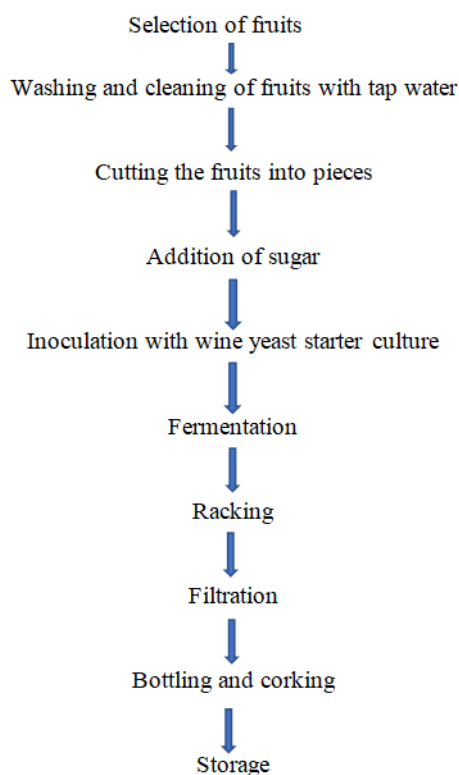


Fig. 1. Flowchart of Indian olive cider preparation

#### 2.4 Determination of Physio-Chemical Parameters

The physio-chemical changes that the cider underwent during production and storage were examined. The pH of the must was determined using Association of Official Agricultural Chemists (AOAC, 2004) procedure where a digital pH meter was used to determine the product's pH, while a hand-held refractometer was used to measure TSS and the results were expressed as degree brix ( $^{\circ}\text{B}$ ) (AOAC, 2000), titratable acidity was measured by using phenolphthalein as an indicator (AOAC, 2000) to titrate 10 ml of an aliquot against a standard solution of 0.1 N NaOH. The appearance of light pink color was taken as an end point, and a hydrometer was used to measure alcohol content and specific gravity (Triple scale Hydrometer). The product was also examined for color and appearance, taste, aroma, and overall acceptability using a 9-point Hedonic scale with a panel of 5 experts.

### 3. RESULTS AND DISCUSSION

The experiment entitled "Effect of yeast and different levels of sugar on Indian olive

(*Elaeocarpus serratus* L.) cider" was undertaken in the Post-Harvest Laboratory, Department of Horticulture, Sam Higginbottom University of Agriculture, Technology and Sciences, Prayagraj during the year 2022-2023. The results of the investigation regarding production of cider from Indian olive are presented here (Tables 2 to 4).

A completely randomized block design by Panse and Sukhtme's analysis of variance (ANOVA) approach was used for the statistical analysis. Using the critical difference (C.D at 5%) threshold of significance, the overall significance of differences between treatments was examined. A window-based computing tool called OPSTAT was used to statistically analyze the results (Sheoran, 2004).

#### 3.1 Total Soluble Solids ( $^{\circ}\text{Brix}$ )

Changes in the TSS of Indian olive cider during fermentation are presented in Table 2. The total soluble solids of cider, at the end of the fermentation period, is an important quality parameter and an indicator of the stability and completeness of fermentation. The statistical analysis shown that there were significant

differences in the TSS of all the treatments during 90 days of storage. The total soluble solids content in Indian olive cider showed decreasing trend in all the treatments. It is possible that the fermentation of sugars into alcohol by the action of yeast during storage is what caused the decrease in the total soluble solids content of Indian olive cider. The general decrease in TSS was a function of time and was undoubtedly caused by the yeast fermenting the sugar. This is typical cider fermentation behavior for any alcoholic fruit juice fermentation. The decrease in the TSS content of cider indicates the conversion of sugar into alcohol by yeast during fermentation. The results found are similar to the findings of Isitua et al. [8] in banana wine. The maximum score (29.86) of TSS (°brix) was observed in treatment T8 (500 g Indian olive + 250 ml water +300 g sugar +1.5 g yeast) and the lowest score (5.5) was observed in treatment T5 (500 g Indian olive + 250 ml water +150 g sugar +1.5 g yeast).

### 3.2 pH

The statistical analysis shown that there were significant differences in pH during 90 days of storage. As fermentation time increased, the pH steadily decreased. The changes in pH are due to the effect of yeast strain and fermentation time. The decrease in pH with the increase in acidity of cider may be due to the formation of hydrogen ions by the action of yeast. The results obtained are similar to the findings of Akin et al. [9]. The lowest score of pH (3.21) was found in treatment T5 (500 g Indian olive + 250 ml water +150 g sugar +1.5 g yeast) whereas the maximum score (4.69) was found in treatment T8 (500 g Indian olive + 250 ml water +300 g sugar +1.5 g yeast).

### 3.3 Titratable Acidity (%)

When the pH dropped, it was discovered that the titratable acidity increased, indicating that more organic acids were being generated as the microbes used the substrates. Acidity plays a vital role in determining cider quality by aiding the fermentation process and enhancing the overall characteristics and balance of the cider. A lack of acidity will mean poor fermentation. Titratable acidity increased as fermentation progressed. During the storage period of 90 days, as shown in Table 2, the increase in acidity of Indian olive cider may possibly be due to the production of certain organic acids such as citric, mucic, and tartaric acids by yeast. The results shown are

similar to the findings of [10] in pomegranate cider. The lowest score (0.35%) of acidity was observed in treatment T7 (500 g Indian olive + 250 ml water +250 g sugar +1.5 g yeast) and the maximum score (0.83 %) was observed in treatment T5 (500 g Indian olive + 250 ml water +150 g sugar +1.5 g yeast).

### 3.4 Alcohol Content (%)

With the increase in fermentation time, alcohol concentration also increases. During 90 days of storage as shown in Table 2, the increase in alcohol content of Indian olive cider with yeast and different levels of sugar during storage may be possible due to the variation in performance of the sugar affecting the fermenting ability, hence the varied alcohol production. The results of the present investigation are similar to the findings of Wanapu et al. [11] in rose apple cider and in banana wine [12]. The highest score (10.72 %) of alcohol content was found in treatment T5 (500 g Indian olive + 250 ml water +150 g sugar +1.5 g yeast) and the lowest score (4.57 %) was found in treatment T8 (500 g Indian olive + 250 ml water +300 g sugar +1.5 g yeast).

### 3.5 Specific Gravity

As shown in Table 2, the specific gravity decreases as the fermentation time of cider increases. The decrease in the specific gravity of Indian olive cider during storage may be possibly due to the concentration of yeast used and different levels of sugar in the cider production. It is also reported that *S. cerevisiae* reduces the specific gravity of fruit juices during fermentation. The present results are similar to the findings of Jarvis, [13] in apple cider and in Mahua wine [14]. The lowest score of specific gravity (1.021) was observed in treatment T5 (500 g Indian olive + 250 ml water +150 g sugar +1.5 g yeast) and the maximum score (1.128) was observed in treatment T8 (500 g Indian olive + 250 ml water +300 g sugar +1.5 g yeast).

### 3.6 Organoleptic Evaluation

As shown in Table 3, the highest sensory scores for organoleptic evaluation such as color and appearance, aroma, taste, and overall acceptability were observed in treatment T6 (500 g Indian olive + 250 ml water +200 g sugar +1.5 g yeast) with 8.14, 8.20, 8.69 and 8.43 which indicates that the judges approved it.

**Table 2. Physio-chemical parameters of Indian olive cider during storage**

Treatment symbols	Treatment details	Total Soluble Solids (°Brix)				pH				Acidity (%)				Alcohol (%)			Specific Gravity			
		Initial	30DAS	60DAS	90DAS	Initial	30DAS	60DAS	90DAS	Initial	30DAS	60DAS	90DAS	30DAS	60DAS	90DAS	Initial	30DAS	60DAS	90DAS
T1	Indian olive + water + 150 g sugar	19.2	12.33	8.3	6.23	4.39	4.31	4.03	3.36	0.51	0.62	0.7	0.74	6.83	9.01	10.57	1.071	1.051	1.032	1.024
T2	Indian olive + water + 200 g sugar	20.36	13.33	9.21	6.86	4.43	4.4	4.13	3.57	0.47	0.54	0.62	0.69	6.3	8.74	10.45	1.084	1.054	1.037	1.027
T3	Indian olive + water + 250 g sugar	23.13	14.47	9.76	7.46	4.64	4.45	3.95	3.37	0.44	0.5	0.53	0.61	4.78	7.74	8.71	1.097	1.059	1.038	1.029
T4	Indian olive + water + 300 g sugar	26.96	17.26	10.86	7.73	4.67	4.47	4.12	3.66	0.36	0.46	0.51	0.55	4.55	6.73	7.53	1.116	1.071	1.044	1.031
T5	Indian olive + water + 150 g sugar + 1.5 g yeast	15.53	10.3	7.8	5.5	4.35	4.21	3.79	3.21	0.56	0.63	0.73	0.83	7.49	9.56	10.72	1.063	1.04	1.031	1.021
T6	Indian olive + water + 200 g sugar + 1.5 g yeast	50.6	12.56	8.43	6.36	4.61	4.42	4.08	3.43	0.48	0.56	0.61	0.64	6.43	8.62	9.69	1.084	1.051	1.032	1.024
T7	Indian olive + water + 250 g sugar + 1.5 g yeast	28.93	19.1	13.7	10.56	4.62	4.41	4.1	3.45	0.35	0.42	0.49	0.56	4.47	6.56	7.68	1.124	1.071	1.055	1.042
T8	Indian olive + water + 300 g sugar + 1.5 g yeast	29.86	20.5	14.56	12.36	4.69	4.44	4.11	3.81	0.43	0.45	0.48	0.53	4.57	6.42	7.35	1.128	1.081	1.058	1.05
F-test		S	S	S	S	S	S	S	S	S	S	S	S	S	S	S	S	S	S	S
SE.(d)		0.289	0.172	0.149	0.139	0.067	0.61	0.54	0.52	0.01	0.009	0.009	0.009	0.14	0.09	0.069	0.002	0.001	0.001	0.001
CD at 5 %		0.617	0.367	0.319	0.298	0.144	0.13	0.115	0.11	0.021	0.019	0.02	0.02	0.3	0.192	0.147	0.004	0.002	0.002	0.001
CV (%)		1.532	1.218	1.653	2.665	1.442	1.811	1.848	1.888	2.713	2.089	1.981	1.736	3.024	1.385	0.928	1.19	0.097	0.069	0.101

\*In all treatments 500g Indian olive fruit and 250ml of water were used uniformly

**Table 3. The organoleptic score of Indian olive cider during storage**

Treatment symbols	Treatment details	Colour and appearance			Aroma			Taste			Overall acceptability		
		30 DAS	60 DAS	90 DAS	30 DAS	60 DAS	90 DAS	30 DAS	60 DAS	90 DAS	30 DAS	60 DAS	90 DAS
T1	Indian olive + water + 150 g sugar	5.11	5.84	6.73	5.73	6.13	6.69	6.08	6.38	6.97	6	6.45	7.13
T2	Indian olive + water + 200 g sugar	5.4	6.65	7.6	6.22	6.72	7.63	6.52	7.25	7.84	6.02	6.5	7.66
T3	Indian olive + water + 250 g sugar	4.78	5.69	6.15	5.27	5.75	6.61	5.42	5.81	6.28	5.76	5.94	6.82
T4	Indian olive + water + 300 g sugar	4.28	5.61	5.98	5.14	5.47	6.25	4.77	5.12	5.64	4.83	5.08	6.58
T5	Indian olive + water + 150 g sugar + 1.5 g yeast	6.28	7.81	8.19	6.79	7.14	7.61	6.28	7.62	8.14	6.64	6.92	7.93
T6	Indian olive + water + 200 g sugar + 1.5 g yeast	6.38	7.85	8.14	7.13	7.61	8.2	6.59	8.18	8.69	7.22	7.64	8.43
T7	Indian olive + water + 250 g sugar + 1.5 g yeast	5.71	6.72	7.68	5.95	6.2	6.75	6.11	6.9	7.21	6.58	7.11	7.72
T8	Indian olive + water + 300 g sugar + 1.5 g yeast	5.51	6.28	6.62	5.4	5.89	6.49	5.56	6.2	6.71	5.54	6.19	6.72
F-Test		S	S	S	S	S	S	S	S	S	S	S	S
SE.(d)		0.044	0.060	0.032	0.041	0.026	0.031	0.066	0.031	0.025	0.078	0.030	0.025
CD at 5 %		0.094	0.129	0.032	0.088	0.055	0.067	0.141	0.066	0.054	0.166	0.165	0.053
CV (%)		0.995	1.125	0.545	0.851	0.495	0.548	1.361	0.570	0.427	1.565	0.576	0.412

\*In all treatments 500g Indian olive fruit and 250ml of water were used uniformly

**Table 4. Economics of different treatments and benefit cost ratio of Indian olive cider**

Treatment no.	Treatment details	Total cost (Rs)	Cider output	Selling rate (Rs/bottle)	Gross return (Rs)	Net return (Rs)	Benefit cost ratio
T1	Indian olive + water + 150 g sugar	189.17	3	260	780	212.5	1.44
T2	Indian olive + water + 200 g sugar	191.67	3	270	810	234.9	1.41
T3	Indian olive + water + 250 g sugar	194.17	3	250	750	167.5	1.29
T4	Indian olive + water + 300 g sugar	196.67	3	220	660	69.9	1.11
T5	Indian olive + water + 150 g sugar + 1.5 g yeast	195.92	3	290	870	282.2	1.48
T6	Indian olive + water + 200 g sugar + 1.5 g yeast	198.42	3	300	900	304.7	1.51
T7	Indian olive + water + 250 g sugar + 1.5 g yeast	200.92	3	280	840	237.2	1.39
T8	Indian olive + water + 300 g sugar + 1.5 g yeast	203.42	3	230	690	79.7	1.13

\*In all treatments 500g Indian olive fruit and 250ml of water were used uniformly

#### 4. CONCLUSION

Based on the findings of the present investigation it is concluded that treatment T5 (Indian olive 500 g + 250 ml water + 150 g sugar + yeast 1.5 g) was found superior in terms of Total Soluble Solids (5.50 °Brix), pH (3.21), acidity (0.83%), alcohol (10.72%) and specific gravity (1.021). Whereas, in terms of color and appearance (8.19), aroma (8.20), taste (8.69), and overall acceptability (8.43), treatment T6 (Indian olive 500 g +250 ml water +200 g sugar +1.5 g yeast) was found superior. Similarly, treatment T6 showed the highest BC ratio (1.51) followed by T5 (1.48).

#### COMPETING INTERESTS

Authors have declared that no competing interests exist.

#### REFERENCES

1. Mallawaarachchi MALN, Madhujith T, Suriyagoda L, and Pushpakumara DKNG. Antioxidant efficacy of selected underutilized fruit species grown in Sri Lanka. *Tropical Agricultural Research*. 2021;32(1):68-80.
2. Prantik SH, Sarma B, Lahkar L, Kumar BS. Habitat distribution modelling and reinforcement of *Elaeocarpus serratus* L.- a threatened tree species of Assam, India for improvement of its conservation status. *Acta Ecologica Sinica*. 2018;39(2019): 42-29.
3. Rajapaksha U. Traditional food plants in Sri Lanka. Hector Kobbekaduwa Agrarian Research and Training Institute.1998; 516-520.
4. Dudley R. Fermenting fruit and the historical ecology of ethanol ingestion. Is alcoholism in more humans an evolutionary hangover? *Addiction*. 2002;97(4):381-388.
5. Romano P, Fiore C, Paragggio M, Caruso M, Capece A. Function of yeast species and strains in wine flavour. *International Journal of Food Microbiology*. 2003;86(1-2):169-180.
6. Fleet GH. Yeast interactions and wine flavor. *International Journal of Food Microbiology*. 2003;86:11-22.
7. Vinod K and Choudhary. Production of apple cider. Central Food Technological Research Institute. 1969.
8. Isitua CC, Ibeh IN. Novel method of wine production from banana (*Musa acuminata*) and pineapple (*Ananas comosus*) wastes. *African Journal of Biotechnology*. 2010; 9(44). ISSN 168.
9. Akin H, Brandam C, Meyer XM, Strehaiano PA. Model for pH determination during alcoholic fermentation of a grape must by *Saccharomyces cerevisiae*. *Chemical Engineering Processing Process Intensification*. 2008;47:1986-1993.
10. Ngaihling C, Topno SE. Effect of different levels of local yeast in pomegranate (*Punica granatum* L.) cider. *International Journal of Plants and Soil Science*. 2023;35(14):80-88.
11. Wanapu C, Boonkerd N, Dithavibool L. Winemaker. Sombun Printing House: Bangkok, Thailand; 2004.
12. Beera, V., Mangam, R.B. and Enthoti, K. Mango wine. Standardization and screening of cultivars using different strains of *Saccharomyces cerevisiae*. *Asian Journal of Multidisciplinary Studies*. 2013;1(4):35-42.
13. Jarvis B. Cider (Cyder; Hard cider). In *Encyclopedia of Food Microbiology*. 2014; 1:437-443.
14. Yadav P, Garg N, Diwedi DH. Effect of location of cultivar, fermentation temperature and additives on the physico-chemical and sensory qualities on Mahua (*Madhuca indica* J. F. Gmel.) wine preparation. *Indian Journal of Natural Products and Resources*. 2009;8(4): 406-418.

© 2023 Phungshok et al.; This is an Open Access article distributed under the terms of the Creative Commons Attribution License (<http://creativecommons.org/licenses/by/4.0>), which permits unrestricted use, distribution, and reproduction in any medium, provided the original work is properly cited.

Peer-review history:

The peer review history for this paper can be accessed here:  
<https://www.sdiarticle5.com/review-history/102219>